

Quarterly Industry Update

As of March 31, 2017

Industry: Wearable Devices



Industry Summary

Cogent Valuation identified Wearable Devices publicly traded companies, IPOs, and recent M&A transactions within the Wearable Devices industry, which provides a basis for market and transaction pricing that can be used by your firm in estimating market sentiment and its impact on your firm's value. Over the last year since March 31, 2016, the median 52-week share price return of the Wearable Devices industry was 24.4%. Between March 31, 2015 and March 31, 2017, the median EV/EBITDA multiple increased from 13.6 to 16.0. However, the median price-to-earnings multiple decreased from 35.6 to 34.1 over the same period.

Comparable Public Company Key Statistics

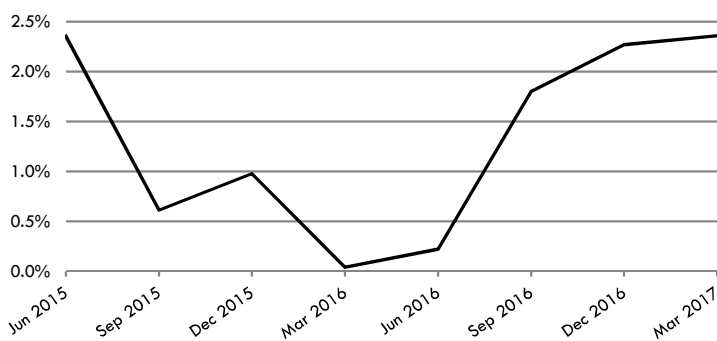
Median 52-Week Return	24.4%	Median EV/Revenue Multiple	2.2x	Median Price/Earnings Multiple	34.1x
Median 3-Year CAGR Return	14.8%	Median EV/EBITDA Multiple	16.0x	Median EV/Gross CF Multiple	31.4x

Comparable Public Company Market Price Returns (As of March 31, 2017)

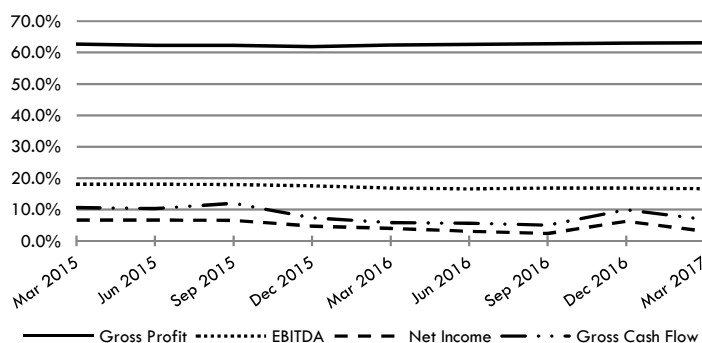
	YTD	3 Month	1 Year	2 Year	3 Year	5 Year	2016	2015	2014	2013	2012
CONMED Corporation	0.5%	0.5%	5.9%	-6.2%	0.7%	8.3%	0.3%	-2.0%	5.8%	52.1%	8.9%
C. R. Bard, Inc.	10.6%	10.6%	22.6%	21.9%	18.9%	20.3%	18.6%	13.7%	24.4%	37.0%	14.3%
Exactech, Inc.	-7.7%	-7.7%	24.4%	-0.8%	3.8%	9.7%	50.4%	-23.0%	-0.8%	40.2%	2.9%
Integra LifeSciences Holdings Corporation	-1.8%	-1.8%	25.1%	16.9%	22.4%	19.4%	26.6%	25.0%	13.7%	22.4%	26.4%
Orthofix International N.V.	5.4%	5.4%	-8.1%	3.1%	8.2%	0.3%	-7.7%	30.4%	31.7%	-42.0%	11.6%
ResMed Inc.	16.0%	16.0%	24.5%	0.1%	17.2%	18.4%	15.6%	-4.2%	19.1%	13.3%	63.7%
Zemach Hammerman Ltd.	9.8%	9.8%	32.1%	25.6%	14.8%	22.2%	50.3%	2.7%	-8.8%	71.2%	-4.8%
Median of Industry Public Companies	5.4%	5.4%	24.4%	3.1%	14.8%	18.4%	18.6%	2.7%	13.7%	37.0%	11.6%

(Multiple year periods are calculated as the average annual return.)

Median Quarterly Revenue Growth of All Wearable Devices Companies



Median Gross Profit, EBITDA, Net Income and Gross Cash Flow Margins



Median Public Company Multiples of the Wearable Devices Industry

Date:	3/31/2015	6/30/2015	9/30/2015	12/31/2015	3/31/2016	6/30/2016	9/30/2016	12/31/2016	3/31/2017
EV/Revenues Multiple	2.3x	2.5x	2.1x	2.0x	1.9x	2.5x	2.2x	2.3x	2.2x
EV/EBITDA Multiple	13.6x	14.1x	12.9x	14.3x	15.4x	16.3x	16.2x	15.6x	16.0x
Price/Earnings Multiple	35.6x	33.4x	29.9x	18.8x	23.2x	43.0x	34.5x	32.5x	34.1x
EV/Gross Cash Flows Multiple	30.1x	27.2x	32.6x	22.2x	43.4x	25.7x	43.6x	25.9x	31.4x

This industry research is provided at no charge to Cogent Valuation's clients. Research or detailed information not covered in this report can be obtained for a fee. Contact Steven Kam at 415-392-0888 for additional information or questions in connection with this research report. Copyright © 2017 Cogent Valuation. All Rights Reserved.

Quarterly Industry Update

As of March 31, 2017

Industry: Wearable Devices



Industry Initial Public Offerings (dollars in millions, except share prices)

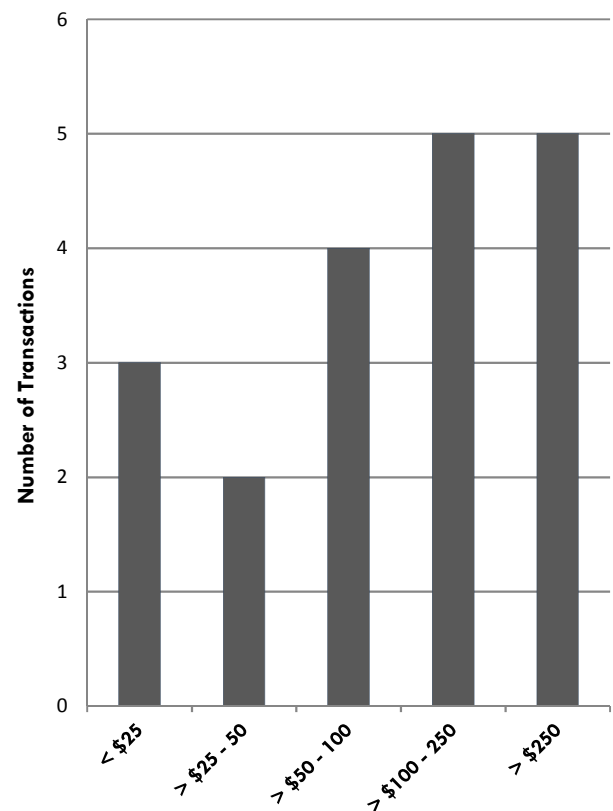
Offer Date	Company Name	Offer Price	Shares Offered	Amount Raised	Total Assets	Debt	LTM Revenues	LTM EBITDA	LTM Net Income	LTM Cash Flows
11/3/2016	Neurotech International Limited	\$0.15	35.0	\$5.4	\$2.2	\$0.7	\$0.2	(\$2.7)	(\$3.3)	(\$2.6)
10/18/2011	ZELTIQ Aesthetics, Inc.	\$13.00	7.0	\$91.0	\$19.3	\$1.0	\$50.5	(\$5.1)	(\$6.4)	(\$4.4)
2/2/2011	Tornier N.V.	\$19.00	8.8	\$166.3	\$499.2	\$133.8	\$223.4	\$13.2	(\$62.1)	\$28.6
5/4/2006	Northstar Neuroscience, Inc.	\$15.00	7.1	\$106.5	\$21.7	\$5.8	\$0.0	(\$15.5)	(\$14.6)	(\$15.3)
2/23/2004	Acelity L.P. Inc.	\$30.00	18.0	\$540.0	\$642.3	\$682.9	\$763.8	\$196.9	\$69.6	\$240.2
Median of All IPOs		nm	nm	\$100.1	\$114.8	\$63.3	\$105.7	\$5.2	(\$10.5)	\$13.0

nm: not meaningful, N/A: not applicable

Recent Merger and Acquisition Transactions for a Majority Stake (dollars in millions)

Transaction Date	Target	Acquirer	Transaction Size	% Bought
4/28/2017	ZELTIQ Aesthetics, Inc.	Allergan plc	\$2,471.3	100%
3/26/2015	Gyrus Group plc	Olympus Corporation	\$17.0	100%
1/7/2015	PneumRx, Inc.	BTG International Inc.	\$475.0	100%
12/5/2014	Symmetry Medical, Inc.	Tecomet, Inc.	\$0.0	100%
10/15/2014	SARL ADVENCIS	bioMérieux SA	\$12.7	100%
8/26/2014	N.G.C. Medical S.p.A.	Medtronic, Inc.	\$238.0	70%
8/25/2014	Sapiens Steering Brain	Medtronic, Inc.	\$200.0	100%
8/8/2014	Avalon Laboratories, LLC	Nordson Medical	\$180.0	100%
7/29/2014	Ulthera, Inc.	Merz North America, Inc.	\$600.0	100%
7/2/2014	Apica Cardiovascular Ltd.	Thoratec Switzerland	\$75.0	100%
7/1/2014	ECP Entwicklungsgesellschaft	ABIOMED Europe GmbH	\$34.3	100%
7/1/2014	Fuji Medical Instruments	Japan Waste Corporation	\$77.0	81%
6/17/2014	AtheroMed, Inc.	Volcano Corporation	\$170.9	100%
5/30/2014	CardioMEMS, Inc.	St. Jude Medical Inc.	\$375.0	81%
5/15/2014	Bioster S.p.A.	Synergy Health plc	\$39.7	100%
5/7/2014	logyn, Inc.	Boston Scientific Corporation	\$65.0	72%
5/2/2014	Silhouette Lift SL	Sinclair Holdings Iberia S.L.	\$22.9	65%
1/23/2014	Solta Medical, Inc.	Valeant Pharmaceuticals	\$279.2	100%
7/16/2013	Pioneer Surgical Tech.	RTI Biologics, Inc.	\$130.0	100%
1/4/2013	Corin Group plc	Investimenti e Part.	\$57.6	100%
Median of the 20 M&A Transaction Targets			\$103.5	100%

Size of the 20 M&A Transactions (dollars in millions)



Definitions of Financial Terms Used in this Quarterly Industry Update:

Enterprise Value (EV): Market Value of Equity + Market Value of Debt - Cash

Earnings Before Interest, Taxes, Depreciation and Amortization (EBITDA): Profitability metric sometimes also referred to as operating profit or operating earnings.

Gross Cash Flows: Net Income + Depreciation and Amortization Expense

Latest Twelve Months (LTM): Financial information is as of the latest twelve months through the date of this Quarterly Industry Update.

Quarterly Industry Update

As of March 31, 2017

Medical Device Industry Aggregates



Comparable Public Company Key Statistics

Median 52-Week Return	14.8%	Median EV/Revenue Multiple	4.2x	Median Price/Earnings Multiple	44.7x
Median Year-to-Date Return	2.4%	Median EV/EBITDA Multiple	16.0x	Median EV/Gross CF Multiple	28.2x

Comparable Public Company Market Price Returns (As of March 31, 2017)

	YTD	3 Month	1 Year	2 Year	3 Year	5 Year	2016	2015	2014	2013	2012
ABIOMED, Inc.	11.1%	11.1%	32.1%	32.3%	68.8%	41.3%	24.8%	137.2%	42.3%	99.0%	-27.2%
AngioDynamics, Inc.	2.8%	2.8%	41.2%	-1.2%	3.3%	7.2%	39.0%	-36.1%	10.8%	56.1%	-25.8%
Atossa Genetics Inc.	-46.1%	-46.1%	-85.3%	-83.2%	-68.9%	N/A	-70.6%	-77.6%	-38.4%	-40.5%	N/A
AtriCure, Inc.	-2.1%	-2.1%	13.8%	-3.3%	0.6%	14.0%	-12.8%	12.4%	6.9%	170.7%	-37.8%
Becton, Dickinson and Company	10.8%	10.8%	20.8%	13.0%	16.1%	18.8%	7.4%	10.7%	25.9%	41.3%	4.6%
BIOLASE, Inc.	-3.6%	-3.6%	3.1%	-18.2%	-17.6%	-12.3%	66.4%	-68.0%	-6.6%	56.1%	-26.6%
Boston Scientific Corporation	15.0%	15.0%	32.2%	18.4%	22.5%	33.0%	17.3%	39.2%	10.2%	109.8%	7.3%
Cardiovascular Systems, Inc.	16.8%	16.8%	172.7%	-14.9%	-3.8%	25.0%	60.1%	-49.7%	-12.3%	173.2%	27.4%
CAS Medical Systems, Inc.	-9.9%	-9.9%	2.1%	4.2%	-12.6%	-7.9%	-9.0%	7.3%	-2.9%	-20.9%	23.0%
CryoLife, Inc.	-13.1%	-13.1%	54.9%	26.7%	18.7%	25.9%	77.6%	-4.9%	2.2%	78.0%	29.8%
Cutera, Inc.	19.3%	19.3%	84.0%	26.6%	22.8%	19.3%	35.7%	19.8%	4.9%	13.1%	20.8%
Cytosorbents Corporation	-17.4%	-17.4%	14.8%	-41.6%	-7.8%	4.7%	-2.2%	-44.0%	218.4%	-3.8%	-18.8%
Daxor Corporation	-10.2%	-10.2%	-7.8%	14.0%	-3.6%	-3.9%	8.5%	8.9%	2.2%	-10.1%	-16.5%
Delcath Systems, Inc.	-90.5%	-90.5%	-98.1%	-92.4%	-89.3%	-83.9%	-88.5%	-58.7%	-70.3%	-79.3%	-59.7%
DexCom, Inc.	41.9%	41.9%	24.8%	16.6%	27.0%	52.0%	-27.1%	48.8%	55.5%	160.6%	46.0%
Endologix, Inc.	26.6%	26.6%	-13.4%	-34.9%	-17.4%	-13.1%	-42.2%	-35.3%	-12.3%	22.5%	24.0%
EnteroMedics Inc.	188.0%	188.0%	-91.5%	-92.3%	-85.6%	-70.0%	-98.5%	-90.8%	-30.4%	-27.1%	64.7%
Escalon Medical Corp.	-4.8%	-4.8%	-87.5%	-72.8%	-59.7%	-37.0%	-90.1%	-34.2%	-18.3%	107.3%	-5.0%
Globus Medical, Inc.	19.4%	19.4%	24.7%	8.3%	3.7%	N/A	-10.8%	17.0%	17.8%	92.4%	N/A
InspireMD, Inc.	-60.4%	-60.4%	-92.2%	-88.9%	-89.1%	-77.7%	-88.6%	-88.7%	-68.4%	-36.9%	-55.3%
LeMaitre Vascular, Inc.	-2.8%	-2.8%	58.7%	71.4%	45.1%	33.1%	46.9%	125.5%	-4.5%	39.5%	-3.0%
Merit Medical Systems, Inc.	9.1%	9.1%	56.3%	22.5%	26.4%	18.4%	42.5%	7.3%	10.1%	13.2%	3.9%
MGC Diagnostics Corporation	6.0%	6.0%	36.3%	7.6%	-9.8%	7.8%	19.5%	3.1%	-49.4%	114.6%	13.0%
NeuroMetrix, Inc.	-16.1%	-16.1%	-66.1%	-69.6%	-59.5%	-48.9%	-62.7%	-74.6%	-33.2%	12.5%	-65.4%
NuVasive, Inc.	10.9%	10.9%	53.5%	27.4%	24.8%	34.7%	24.5%	14.7%	45.9%	109.1%	22.8%
Nxstage Medical, Inc.	2.4%	2.4%	79.0%	24.5%	28.2%	6.8%	19.6%	22.2%	79.3%	-11.1%	-36.7%
Strata Skin Sciences, Inc.	37.5%	37.5%	-36.0%	-51.5%	-54.0%	-57.7%	-60.4%	-7.5%	-81.3%	-64.2%	-51.5%
Stryker Corporation	9.9%	9.9%	22.7%	19.5%	17.3%	18.9%	28.9%	-1.5%	25.5%	37.1%	10.3%
Tandem Diabetes Care, Inc.	-44.2%	-44.2%	-86.2%	-69.2%	-62.1%	N/A	-81.8%	-7.0%	-50.7%	N/A	N/A
The Cooper Companies, Inc.	14.3%	14.3%	29.8%	3.3%	13.3%	19.6%	30.4%	-17.2%	30.9%	33.9%	31.1%
TransEnterix, Inc.	-6.9%	-6.9%	-71.5%	-35.7%	-49.4%	N/A	-47.6%	-14.8%	-64.7%	N/A	N/A
Utah Medical Products, Inc.	-14.4%	-14.4%	-0.4%	2.0%	2.5%	14.9%	24.3%	-2.5%	5.1%	58.6%	33.5%
Varian Medical Systems, Inc.	1.5%	1.5%	13.9%	-1.6%	2.8%	5.7%	11.1%	-6.6%	11.4%	10.6%	4.6%
Median of Industry Public Companies	2.4%	2.4%	14.8%	2.0%	0.6%	7.8%	8.5%	-4.9%	2.2%	37.1%	4.6%

(Multiple year periods are calculated as the average annual return.)

Quarterly Industry Update

As of March 31, 2017

Medical Device Industry Aggregates



Median Public Company Multiples of the Medical Device Industry Aggregates

Date:	3/31/2015	6/30/2015	9/30/2015	12/31/2015	3/31/2016	6/30/2016	9/30/2016	12/31/2016	3/31/2017
EV/Revenues Multiple	3.5x	3.6x	3.1x	3.4x	3.1x	3.1x	3.7x	3.8x	4.2x
EV/EBITDA Multiple	14.5x	14.0x	14.3x	13.3x	14.9x	15.2x	17.2x	16.2x	16.0x
Price/Earnings Multiple	34.9x	36.0x	35.0x	33.4x	34.0x	35.2x	40.7x	35.8x	44.7x
EV/Gross Cash Flows Multiple	27.8x	30.1x	26.8x	40.0x	27.0x	27.2x	28.0x	26.4x	28.2x

Industry Initial Public Offerings - Medical Device Industry Aggregates (dollars in millions, except share prices)

Offer Date	Company Name	Offer Price	Shares Offered	Amount Raised	Total Assets	Debt	LTM Revenues	LTM EBITDA	LTM Net Income	LTM Cash Flows
12/8/2016	Acarix A/S	\$1.93	8.0	\$15.3	N/A	N/A	N/A	N/A	N/A	N/A
11/3/2016	Neurotech International Limited	\$0.15	35.0	\$5.4	\$2.2	\$0.7	\$0.2	(\$2.7)	(\$3.3)	(\$2.6)
10/5/2016	Obalon Therapeutics, Inc.	\$15.00	5.0	\$75.0	\$20.1	\$9.9	\$3.9	(\$15.4)	(\$16.1)	(\$15.2)
7/12/2016	Vincent Medical Holdings Limited	\$0.13	89.3	\$16.4	\$41.3	\$0.6	\$57.8	\$10.5	\$7.5	\$12.2
2/28/2016	Invent Medic Sweden AB	\$0.35	3.0	\$1.1	\$0.5	\$0.1	\$0.1	\$0.0	(\$0.1)	\$0.0
11/10/2015	Advanced Accelerator Applications S.A.	\$16.00	4.7	\$75.0	\$233.9	\$27.1	\$88.7	\$1.2	(\$17.3)	\$9.6
6/4/2015	EndoChoice Holdings, Inc.	\$15.00	6.4	\$95.3	\$102.7	\$39.5	\$64.3	(\$39.7)	(\$58.0)	(\$34.1)
1/30/2015	Avinger, Inc.	\$13.00	5.0	\$65.0	\$23.1	\$32.7	\$11.5	(\$23.9)	(\$32.4)	(\$22.4)
12/19/2014	Medovex Corporation	\$5.75	1.4	\$8.0	\$2.6	\$0.0	\$0.0	(\$0.7)	(\$0.7)	(\$0.7)
11/5/2014	Nevro Corp.	\$18.00	7.0	\$126.0	\$62.9	\$0.0	\$26.6	(\$26.5)	(\$26.2)	(\$26.5)
5/7/2014	K2M Group Holdings, Inc.	\$15.00	8.8	\$132.4	\$296.9	\$43.2	\$155.6	(\$8.1)	(\$37.9)	(\$1.6)
4/15/2014	TriVascular Technologies, Inc.	\$12.00	6.5	\$78.0	\$64.7	\$44.3	\$19.5	(\$42.9)	(\$50.3)	(\$41.9)
11/13/2013	Tandem Diabetes Care, Inc.	\$15.00	8.0	\$120.0	\$48.6	\$29.3	\$21.0	(\$37.1)	(\$48.1)	(\$34.2)
10/8/2013	LDR Holding Corporation	\$15.00	5.0	\$75.0	\$78.7	\$53.8	\$98.0	\$2.5	(\$10.3)	\$5.6
8/2/2012	Globus Medical, Inc.	\$12.00	8.3	\$100.0	\$354.8	\$0.0	\$347.9	\$121.4	\$63.9	\$138.8
6/27/2012	Tesaro, Inc.	\$13.50	6.0	\$81.0	\$93.0	\$0.0	\$0.0	(\$23.2)	(\$23.2)	(\$23.2)
4/30/2012	Supernus Pharmaceuticals, Inc.	\$5.00	3.4	\$50.0	\$53.7	\$29.5	\$0.8	(\$36.9)	\$53.8	(\$36.2)
11/17/2011	Sphere Medical Holding PLC	\$1.46	15.1	\$22.1	\$1.5	\$3.8	\$0.0	(\$6.6)	(\$7.0)	(\$6.3)
4/18/2011	InspireMD, Inc.	\$1.50	7.0	\$10.4	\$4.4	\$1.5	\$4.9	(\$3.1)	(\$3.4)	(\$3.0)
2/10/2011	Kips Bay Medical, Inc.	\$8.00	2.1	\$16.5	\$7.2	\$0.0	\$0.1	(\$8.7)	(\$10.2)	(\$8.6)
2/2/2011	Tornier N.V.	\$19.00	8.8	\$166.3	\$499.2	\$133.8	\$223.4	\$13.2	(\$62.1)	\$28.6
11/23/2010	Anacor Pharmaceuticals, Inc.	\$5.00	12.0	\$60.0	\$20.4	\$9.1	\$31.1	(\$4.3)	(\$6.5)	(\$3.6)
11/22/2010	Zogenix, Inc.	\$4.00	7.1	\$56.0	\$55.0	\$35.9	\$14.6	(\$55.4)	(\$77.6)	(\$54.1)
10/22/2010	STENTYS S.A.	\$16.70	1.9	\$31.6	\$9.3	\$1.7	\$0.1	(\$7.9)	(\$8.1)	(\$7.6)
Median of All IPOs		nm	nm	\$62.5	\$48.6	\$9.1	\$14.6	(\$7.9)	(\$10.3)	(\$6.3)

Disclosures and Limitations: This research report is for informational and discussion purposes only. Information presented herein is not investment advice of any kind to any person and does not constitute a recommendation as to the purchase or sale of any interests or as to any other course of action. General, financial, and statistical information concerning the details of this report and related industry are from sources Cogent Valuation believes to be reliable. Cogent Valuation has accurately reflected such information in this research report; however, Cogent Valuation makes no representation as to the sources' accuracy or completeness and has accepted this information without further verification. Neither all nor any part of the content of this report may be conveyed to the public through advertising, public relations, news, sales, mail, direct transmittal, or other media without the prior written consent of Cogent Valuation. Cogent Valuation's research is as of the date reported herein. Cogent Valuation has no affiliation with any of the companies comprising the industry used as a basis for research in this report, nor does Cogent Valuation hold any investments in the companies listed herein. The content of this report may be used, in part, as a basis for any work that Cogent Valuation performs for you in the future at the sole discretion of Cogent Valuation. THIS REPORT IS NOT TO BE USED OR CONSIDERED UNDER ANY CIRCUMSTANCE BY ANYONE AS INVESTMENT ADVICE. This industry research is provided at no charge to Cogent Valuation's clients. Research or detailed information not covered in this report can be obtained for a fee. Contact [Steven Kam](mailto:Steven.Kam@CogentValuation.com) at 415-392-0888 for additional information or questions in connection with this research report. Copyright © 2017 Cogent Valuation. All Rights Reserved.