

# Quarterly Industry Update

As of June 30, 2016

Industry: Online Women's Retail



## Industry Summary

Cogent Valuation identified Online Women's Retail publicly traded companies, IPOs, and recent M&A transactions within the Online Women's Retail industry, which provides a basis for market and transaction pricing that can be used by your firm in estimating market sentiment and its impact on your firm's value. Over the last year since June 30, 2015, the median 52-week share price return of the Online Women's Retail industry was -30.0%. Between June 30, 2014 and June 30, 2016, the median EV/EBITDA multiple increased from 7.6 to 9.7. Furthermore, the median price-to-earnings multiple increased from 15.8 to 26.6 over the same period.

## Comparable Public Company Key Statistics

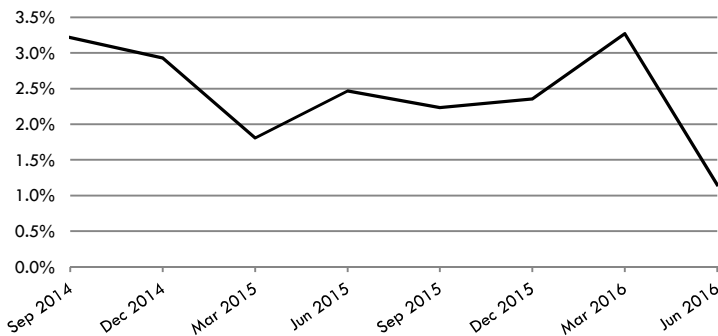
Median 52-Week Return	-30.0%	Median EV/Revenue Multiple	0.9x	Median Price/Earnings Multiple	26.6x
Median 3-Year CAGR Return	-12.4%	Median EV/EBITDA Multiple	9.7x	Median EV/Gross CF Multiple	8.0x

## Comparable Public Company Market Price Returns As of June 30, 2016

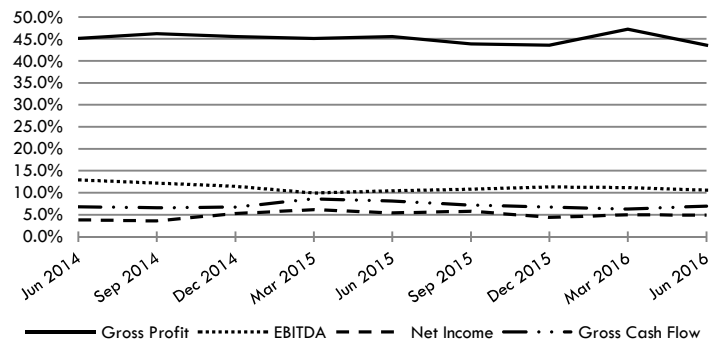
	YTD	3 Month	1 Year	2 Year	3 Year	5 Year	2015	2014	2013	2012	2011
Duluth Holdings Inc.	67.6%	25.5%	N/A	N/A	N/A	N/A	N/A	N/A	N/A	N/A	N/A
Express Inc.	-16.0%	-32.2%	-19.9%	-7.7%	-11.6%	-7.8%	17.6%	-21.3%	23.7%	-24.3%	6.1%
Francesca's Holdings Corporation	-36.5%	-42.3%	-18.0%	-13.4%	-26.5%	N/A	4.3%	-9.2%	-29.0%	49.9%	N/A
Jumei International Holding Limited	-54.4%	-36.6%	-81.9%	-61.0%	N/A	N/A	-33.5%	N/A	N/A	N/A	N/A
Nutrisystem, Inc.	17.2%	21.5%	1.9%	21.7%	29.1%	12.5%	10.7%	18.9%	101.2%	-36.8%	-38.5%
Tilly's, Inc.	-12.7%	-13.5%	-40.1%	-15.1%	-28.7%	N/A	-31.6%	-15.4%	-15.1%	N/A	N/A
Vera Bradley, Inc.	-10.1%	-30.3%	25.7%	-19.5%	-13.2%	-18.0%	-22.7%	-15.2%	-4.2%	-22.2%	-2.3%
Vince Holding Corp	19.7%	-13.4%	-54.3%	-61.3%	N/A	N/A	-82.5%	-14.8%	N/A	N/A	N/A
Vipshop Holdings Limited	-26.9%	-13.3%	-49.8%	-22.9%	56.5%	N/A	-21.9%	133.5%	369.1%	N/A	N/A
<b>Median of Industry Public Companies</b>	<b>-12.7%</b>	<b>-13.5%</b>	<b>-30.0%</b>	<b>-17.3%</b>	<b>-12.4%</b>	<b>-7.8%</b>	<b>-22.3%</b>	<b>-14.8%</b>	<b>9.8%</b>	<b>-23.2%</b>	<b>-2.3%</b>

(Multiple year periods are calculated as the average annual return.)

## Median Quarterly Revenue Growth of All Online Women's Retail Companies



## Median Gross Profit, EBITDA, Net Income and Gross Cash Flow Margins



## Median Public Company Multiples of the Online Women's Retail Industry

Date:	6/30/2014	9/30/2014	12/31/2014	3/31/2015	6/30/2015	9/30/2015	12/31/2015	3/31/2016	6/30/2016
EV/Revenues Multiple	1.6x	1.5x	1.7x	1.6x	1.4x	1.0x	1.1x	1.2x	0.9x
EV/EBITDA Multiple	7.6x	8.0x	9.5x	10.1x	6.8x	6.8x	10.6x	10.3x	9.7x
Price/Earnings Multiple	15.8x	16.9x	22.0x	23.4x	19.3x	18.1x	22.6x	27.8x	26.6x
EV/Gross Cash Flows Multiple	11.3x	11.9x	13.9x	15.8x	12.0x	9.9x	15.1x	16.7x	8.0x

This industry research is provided at no charge to Cogent Valuation's clients. Research or detailed information not covered in this report can be obtained for a fee. Contact Steven Kam at 415-392-0888 for additional information or questions in connection with this research report. Copyright © 2016 Cogent Valuation. All Rights Reserved.

# Quarterly Industry Update

As of June 30, 2016

Industry: Online Women's Retail



## Industry Initial Public Offerings (dollars in millions, except share prices)

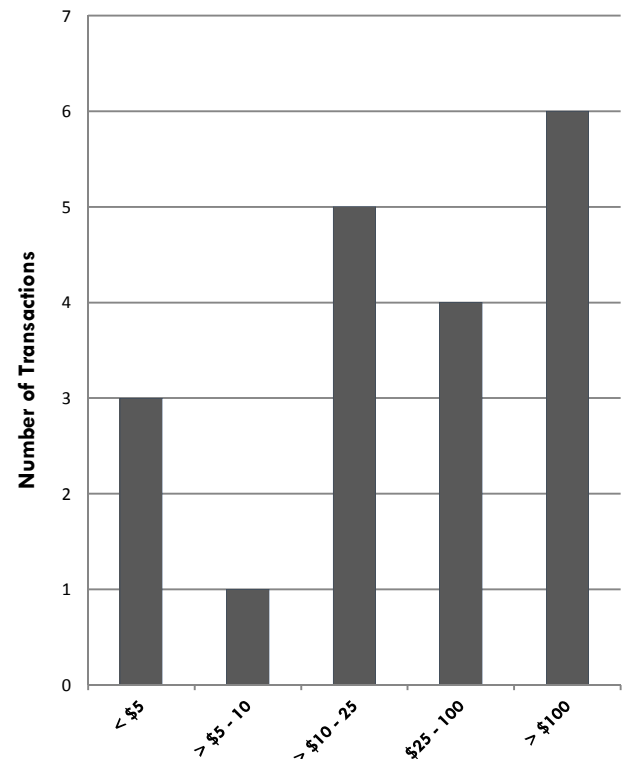
Offer Date	Company Name	Offer Price	Shares Offered	Amount Raised	Total Assets	Debt	LTM Revenues	LTM EBITDA	LTM Net Income	LTM Cash Flows
11/19/2015	Duluth Holdings Inc.	\$12.00	6.7	\$80.0	\$74.4	\$12.7	\$261.2	\$27.8	\$15.6	\$30.0
5/16/2014	Jumei International Holding Limited	\$22.00	11.1	\$395.1	N/A	N/A	N/A	N/A	N/A	N/A
11/21/2013	Vince Holding Corp	\$20.00	10.0	\$200.0	\$467.8	\$502.4	\$752.5	\$53.4	(\$52.1)	\$59.0
5/3/2012	Tilly's, Inc.	\$15.50	8.0	\$124.0	\$140.8	\$4.6	\$400.6	\$50.6	\$20.8	\$65.7
3/22/2012	Vipshop Holdings Limited	\$6.50	11.0	\$71.5	\$167.4	\$15.7	\$227.1	(\$105.1)	(\$107.3)	(\$103.7)
7/21/2011	Francesca's Holdings Corporation	\$17.00	10.0	\$170.0	\$67.7	\$92.6	\$151.0	\$38.4	\$19.2	\$41.3
10/20/2010	Vera Bradley, Inc.	\$16.00	11.0	\$176.0	\$169.2	\$33.2	\$322.9	\$67.6	\$56.0	\$75.7
5/12/2010	Express Inc.	\$17.00	16.0	\$272.0	\$869.6	\$418.7	\$1,721.1	\$206.8	\$75.3	\$271.5
<b>Median of All IPOs</b>		<b>nm</b>	<b>nm</b>	<b>\$173.0</b>	<b>\$167.4</b>	<b>\$33.2</b>	<b>\$322.9</b>	<b>\$50.6</b>	<b>\$19.2</b>	<b>\$59.0</b>

nm: not meaningful, N/A: not applicable

## Recent Merger and Acquisition Transactions for a Majority Stake (dollars in millions)

Transaction Date	Target	Acquirer	Transaction Size	% Bought
5/9/2016	The Mountain Corporation	Gladstone Investment Corp.	\$25.5	100%
4/25/2016	Karrah Inc.	Precious Investments	\$1.5	100%
4/19/2016	Southern Tide, LLC	Oxford of South Carolina	\$85.0	100%
2/1/2016	Gilt Groupe, Inc.	Hudson's Bay Company	\$250.0	100%
1/7/2016	Barstool Sports, Inc.	The Chernin Group, LLC	\$15.0	51%
9/30/2015	zulily, Inc.	QVC, Inc.	\$2,476.2	100%
7/13/2015	Orchard Brands Corp.	Bluestem Brands, Inc.	\$410.0	100%
6/1/2015	Karmaloop, Inc.	CapX Partners	\$13.0	100%
4/3/2015	SkyMall, LLC	C&A Marketing Inc.	\$1.9	100%
3/31/2015	MUSE & Co. Ltd.	Mixi, Inc.	\$14.7	94%
3/6/2015	LogoSportswear, Inc.	Gladstone Investment Corp.	\$9.7	100%
12/12/2014	Shoes.com, Inc.	Shoes.com Technologies	\$11.5	100%
9/5/2014	Surfstitch Pty Ltd.	N/A	\$35.7	100%
8/5/2014	M and M Direct Limited	BESTSELLER A/S	\$237.8	100%
7/11/2014	Shoes.com, Inc.	Hardy Capital Partners	\$140.0	100%
6/30/2014	Healthy Directions, LLC	Helen of Troy Limited	\$195.9	100%
3/5/2014	Altrec Inc.	TruSnow.com	\$3.3	100%
1/24/2014	Brandosab AB	Footway Group AB (publ)	\$11.2	100%
1/13/2014	ideeli Inc.	Groupon, Inc.	\$62.1	100%
<b>Median of the 19 M&amp;A Transaction Targets</b>			<b>\$25.5</b>	<b>100%</b>

## Size of the 19 M&A Transactions (dollars in millions)



### Definitions of Financial Terms Used in this Quarterly Industry Update:

Enterprise Value (EV): Market Value of Equity + Market Value of Debt - Cash

Earnings Before Interest, Taxes, Depreciation and Amortization (EBITDA): Profitability metric sometimes also referred to as operating profit or operating earnings.

Gross Cash Flows: Net Income + Depreciation and Amortization Expense

Latest Twelve Months (LTM): Financial information is as of the latest twelve months through the date of this Quarterly Industry Update.

**Disclosures and Limitations:** This research report is for informational and discussion purposes only. Information presented herein is not investment advice of any kind to any person and does not constitute a recommendation as to the purchase or sale of any interests or as to any other course of action. General, financial, and statistical information concerning the details of this report and related industry are from sources Cogent Valuation believes to be reliable. Cogent Valuation has accurately reflected such information in this research report; however, Cogent Valuation makes no representation as to the sources' accuracy or completeness and has accepted this information without further verification. Neither all nor any part of the content of this report may be conveyed to the public through advertising, public relations, news, sales, mail, direct transmittal, or other media without the prior written consent of Cogent Valuation. Cogent Valuation's research is as of the date reported herein. Cogent Valuation has no affiliation with any of the companies comprising the industry used as a basis for research in this report, nor does Cogent Valuation hold any investments in the companies listed herein. The content of this report may be used, in part, as a basis for any work that Cogent Valuation performs for you in the future at the sole discretion of Cogent Valuation. THIS REPORT IS NOT TO BE USED OR CONSIDERED UNDER ANY CIRCUMSTANCE BY ANYONE AS INVESTMENT ADVICE. This industry research is provided at no charge to Cogent Valuation's clients. Research or detailed information not covered in this report can be obtained for a fee. Contact Steven Kam at 415-392-0888 for additional information or questions in connection with this research report. Copyright © 2016 Cogent Valuation. All Rights Reserved.