

# Quarterly Industry Update

As of June 30, 2016

Industry: Inflammation Pharma



## Industry Summary

Cogent Valuation identified Inflammation Pharma publicly traded companies, IPOs, and recent M&A transactions within the Inflammation Pharma industry, which provides a basis for market and transaction pricing that can be used by your firm in estimating market sentiment and its impact on your firm's value. Over the last year since June 30, 2015, the median 52-week share price return of the Inflammation Pharma industry was -26.7%. Between June 30, 2014 and June 30, 2016, the median EV/EBITDA multiple decreased from 14.3 to 11.9. Furthermore, the median price-to-earnings multiple decreased from 25.5 to 19.7 over the same period.

## Comparable Public Company Key Statistics

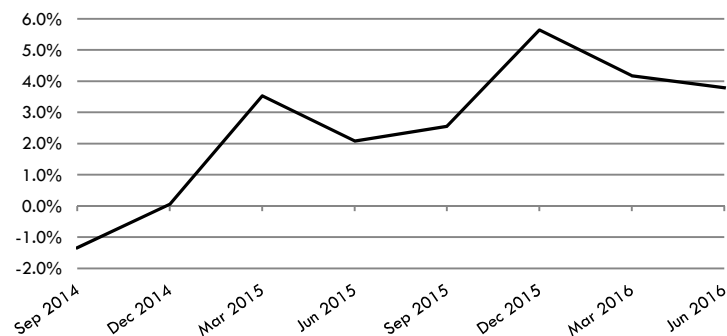
Median 52-Week Return	-26.7%	Median EV/Revenue Multiple	4.9x	Median Price/Earnings Multiple	19.7x
Median 3-Year CAGR Return	7.9%	Median EV/EBITDA Multiple	11.9x	Median EV/Gross CF Multiple	16.9x

## Comparable Public Company Market Price Returns As of June 30, 2016

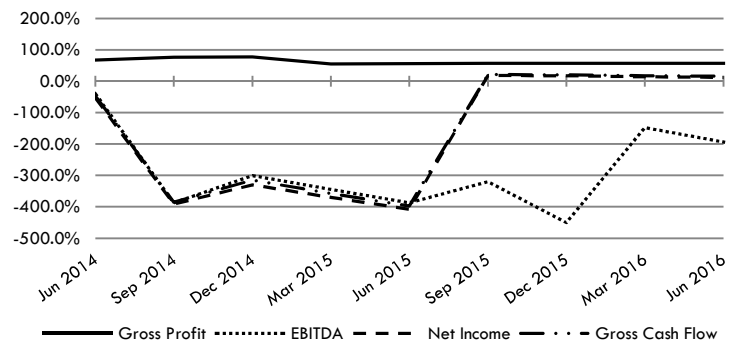
	YTD	3 Month	1 Year	2 Year	3 Year	5 Year	2015	2014	2013	2012	2011
Abbott Laboratories	-12.5%	-6.0%	-19.9%	-2.0%	4.1%	-5.7%	-0.2%	17.5%	-41.5%	16.5%	17.4%
Amgen Inc.	-6.3%	1.5%	-0.9%	13.4%	15.5%	21.1%	1.9%	39.6%	32.3%	34.2%	17.0%
Ampio Pharmaceuticals, Inc.	-63.1%	-42.7%	-45.6%	-60.7%	-39.3%	-30.2%	2.0%	-51.9%	98.6%	-15.9%	77.9%
Aquinox Pharmaceuticals Inc.	-47.0%	-24.9%	-4.6%	-16.2%	N/A	N/A	66.4%	N/A	N/A	N/A	N/A
Celgene Corporation	-17.6%	-1.5%	-14.8%	7.2%	19.0%	26.7%	7.1%	32.4%	115.3%	16.1%	14.3%
Concert Pharmaceuticals, Inc.	-40.8%	-17.8%	-24.6%	5.4%	N/A	N/A	42.4%	N/A	N/A	N/A	N/A
Gilead Sciences Inc.	-17.6%	-9.2%	-28.7%	0.3%	17.6%	32.1%	7.4%	25.5%	104.5%	79.5%	12.9%
Immunomedics Inc.	-24.4%	-7.2%	-42.9%	-20.3%	-24.7%	-10.6%	-36.0%	4.3%	57.5%	-12.3%	-7.0%
Ocular Therapeutix, Inc.	-47.2%	-48.8%	-76.5%	N/A	N/A	N/A	-60.2%	N/A	N/A	N/A	N/A
Omeros Corporation	-33.1%	-31.4%	-41.5%	-22.2%	27.8%	20.6%	-36.5%	119.5%	117.5%	31.4%	-52.1%
Pfizer Inc.	9.1%	18.8%	5.0%	8.9%	7.9%	11.3%	3.6%	1.7%	22.1%	15.9%	23.6%
Portola Pharmaceuticals, Inc.	-54.1%	15.7%	-48.2%	-10.1%	-1.3%	N/A	81.7%	10.0%	N/A	N/A	N/A
<b>Median of Industry Public Companies</b>	<b>-28.8%</b>	<b>-8.2%</b>	<b>-26.7%</b>	<b>-2.0%</b>	<b>7.9%</b>	<b>16.0%</b>	<b>2.8%</b>	<b>17.5%</b>	<b>78.1%</b>	<b>16.3%</b>	<b>15.6%</b>

(Multiple year periods are calculated as the average annual return.)

## Median Quarterly Revenue Growth of All Inflammation Pharma Companies



## Median Gross Profit, EBITDA, Net Income and Gross Cash Flow Margins



## Median Public Company Multiples of the Inflammation Pharma Industry

Date:	6/30/2014	9/30/2014	12/31/2014	3/31/2015	6/30/2015	9/30/2015	12/31/2015	3/31/2016	6/30/2016
EV/Revenues Multiple	4.7x	5.8x	6.4x	6.0x	5.8x	5.1x	4.9x	4.7x	4.9x
EV/EBITDA Multiple	14.3x	14.0x	14.9x	14.1x	12.5x	11.0x	11.9x	10.6x	11.9x
Price/Earnings Multiple	25.5x	21.8x	24.8x	24.0x	20.5x	19.9x	21.4x	15.1x	19.7x
EV/Gross Cash Flows Multiple	19.0x	20.1x	22.6x	21.5x	18.9x	16.4x	17.9x	13.6x	16.9x

This industry research is provided at no charge to Cogent Valuation's clients. Research or detailed information not covered in this report can be obtained for a fee. Contact Steven Kam at 415-392-0888 for additional information or questions in connection with this research report. Copyright © 2016 Cogent Valuation. All Rights Reserved.

# Quarterly Industry Update

As of June 30, 2016

Industry: Inflammation Pharma



## Industry Initial Public Offerings (dollars in millions, except share prices)

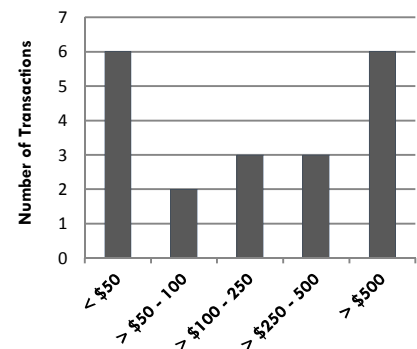
Offer Date	Company Name	Offer Price	Shares Offered	Amount Raised	Total Assets	Debt	LTM Revenues	LTM EBITDA	LTM Net Income	LTM Cash Flows
5/25/2016	Reata Pharmaceuticals, Inc.	\$11.00	5.5	\$60.5	\$64.6	\$0.0	\$49.7	(\$0.1)	(\$3.1)	\$1.4
2/12/2014	Concert Pharmaceuticals, Inc.	\$14.00	6.0	\$84.0	\$49.0	\$17.4	\$24.2	(\$4.7)	(\$7.9)	(\$3.4)
5/21/2013	Portola Pharmaceuticals, Inc.	\$14.50	8.4	\$122.1	\$134.0	\$0.0	\$72.7	\$8.6	\$6.4	\$9.9
2/8/2010	Invision Limited	\$0.87	7.1	\$6.2	\$0.6	\$2.6	\$0.9	(\$9.9)	(\$10.3)	(\$9.9)
10/7/2009	Omeros Corporation	\$10.00	6.8	\$68.2	\$12.7	\$15.2	\$1.3	(\$23.8)	(\$25.4)	(\$23.3)
9/25/2008	Skyepharma PLC	\$2.76	5.1	\$14.1	\$202.9	\$260.6	\$100.0	(\$2.4)	(\$28.2)	\$6.6
<b>Median of All IPOs</b>		<b>nm</b>	<b>nm</b>	<b>\$64.4</b>	<b>\$56.8</b>	<b>\$8.9</b>	<b>\$37.0</b>	<b>(\$3.6)</b>	<b>(\$9.1)</b>	<b>(\$1.0)</b>

nm: not meaningful, N/A: not applicable

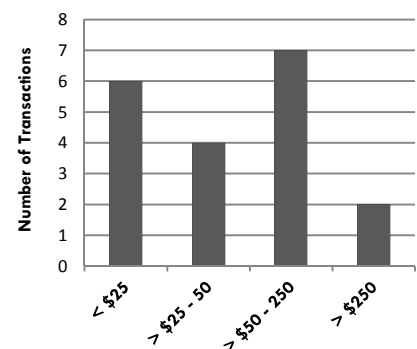
## Recent Merger and Acquisition Transactions for a Majority Stake (dollars in millions)

Transaction Date	Target	Acquirer	Transaction Size	% Bought	LTM Revenues	EV/Revenues
6/10/2016	Skyepharma PLC	Vectura Group plc	\$615.4	100%	\$135.3	4.1x
7/1/2015	Icagen, Inc.	N/A	\$11.0	100%	N/A	N/A
5/1/2015	Cellular Dynamics	Fujifilm Medical	\$289.1	100%	\$16.7	15.3x
4/13/2015	Innocutis Medical, LLC	Cipher Pharmaceuticals	\$48.5	100%	\$10.1	4.8x
11/18/2013	Cisbio Bioassays	Argos Sodontic	\$34.0	100%	\$41.5	0.8x
6/5/2012	ISTA Pharmaceuticals, Inc.	Bausch & Lomb	\$551.5	100%	\$160.3	3.0x
12/29/2011	Idaman Pharma	Pharmaniaga Bhd	\$53.4	100%	\$29.7	1.8x
6/16/2011	Biophausia AB	Medivir AB	\$117.4	100%	\$89.1	1.3x
8/31/2009	Medarex, Inc.	Bristol-Myers Squibb	\$2,325.2	98%	\$60.7	33.5x
4/29/2009	EMO-FARM Sp. z o.o.	ICN Polfa Rzeszów S.A.	\$28.6	100%	\$12.0	2.4x
12/15/2008	Amgen Inc.	Biovitrum AB	\$150.3	100%	\$70.0	2.1x
9/30/2008	Jerini AG	Shire Limited	\$396.0	84%	\$14.2	31.3x
5/22/2008	AsiaPharm Group	MBK Partners	\$239.1	77%	\$75.9	3.7x
12/13/2007	PRA International, Inc.	Genstar Capital, LLC	\$700.8	87%	\$381.9	2.0x
8/2/2007	Tanox Inc.	Genentech, Inc.	\$921.7	100%	\$60.9	12.4x
6/28/2007	Melbrosin International	Bioprogess plc	\$456.5	100%	\$18.9	24.2x
1/31/2007	ZAO ZiO-Zdorovie	Actavis Group ehf.	\$30.8	51%	\$19.1	3.2x
12/12/2006	Kos Pharmaceuticals, Inc.	Abbott Laboratories	\$4,190.9	100%	\$849.3	4.3x
11/24/2006	Jaba Recordati S.A.	Recordati SpA	\$57.4	100%	\$49.7	1.2x
7/7/2006	Scirex Corporation	Premier Research	\$37.0	100%	\$48.0	0.8x
<b>Median of the 20 M&amp;A Transaction Targets</b>			<b>\$194.7</b>	<b>100%</b>	<b>\$49.7</b>	<b>3.2x</b>

Size of M&A Transactions



LTM Revenues Reported



### Definitions of Financial Terms Used in this Quarterly Industry Update:

Enterprise Value (EV): Market Value of Equity + Market Value of Debt - Cash

Earnings Before Interest, Taxes, Depreciation and Amortization (EBITDA): Profitability metric sometimes also referred to as operating profit or operating earnings.

Gross Cash Flows: Net Income + Depreciation and Amortization Expense

Latest Twelve Months (LTM): Financial information is as of the latest twelve months through the date of this Quarterly Industry Update.

**Disclosures and Limitations:** This research report is for informational and discussion purposes only. Information presented herein is not investment advice of any kind to any person and does not constitute a recommendation as to the purchase or sale of any interests or as to any other course of action. General, financial, and statistical information concerning the details of this report and related industry are from sources Cogent Valuation believes to be reliable. Cogent Valuation has accurately reflected such information in this research report; however, Cogent Valuation makes no representation as to the sources' accuracy or completeness and has accepted this information without further verification. Neither all nor any part of the content of this report may be conveyed to the public through advertising, public relations, news, sales, mail, direct transmittal, or other media without the prior written consent of Cogent Valuation. Cogent Valuation's research is as of the date reported herein. Cogent Valuation has no affiliation with any of the companies comprising the industry used as a basis for research in this report, nor does Cogent Valuation hold any investments in the companies listed herein. The content of this report may be used, in part, as a basis for any work that Cogent Valuation performs for you in the future at the sole discretion of Cogent Valuation. THIS REPORT IS NOT TO BE USED OR CONSIDERED UNDER ANY CIRCUMSTANCE BY ANYONE AS INVESTMENT ADVICE. This industry research is provided at no charge to Cogent Valuation's clients. Research or detailed information not covered in this report can be obtained for a fee. Contact [Steven Kam](mailto:Steven.Kam@CogentValuation.com) at 415-392-0888 for additional information or questions in connection with this research report. Copyright © 2016 Cogent Valuation. All Rights Reserved.