

# Quarterly Industry Update

As of March 31, 2016

Industry: Investment Advisory



## Industry Summary

Cogent Valuation identified Investment Advisory publicly traded companies, IPOs, and recent M&A transactions within the Investment Advisory industry, which provides a basis for market and transaction pricing that can be used by your firm in estimating market sentiment and its impact on your firm's value. Over the last year since March 31, 2015, the median 52-week share price return of the Investment Advisory industry was -14.1%. Between March 31, 2014 and March 31, 2016, the median EV/EBITDA multiple decreased from 13.5 to 6.7. Furthermore, the median price-to-earnings multiple decreased from 20.6 to 18.2 over the same period.

## Comparable Public Company Key Statistics

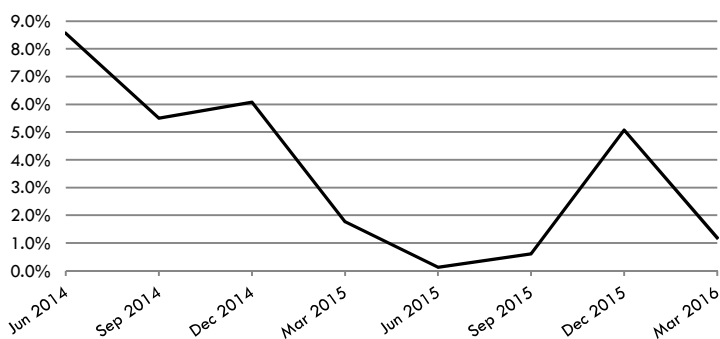
Median 52-Week Return	-14.1%	Median EV/Revenue Multiple	2.8x	Median Price/Earnings Multiple	18.2x
Median 3-Year CAGR Return	3.2%	Median EV/EBITDA Multiple	6.7x	Median EV/Gross CF Multiple	13.2x

## Comparable Public Company Market Price Returns As of March 31, 2016

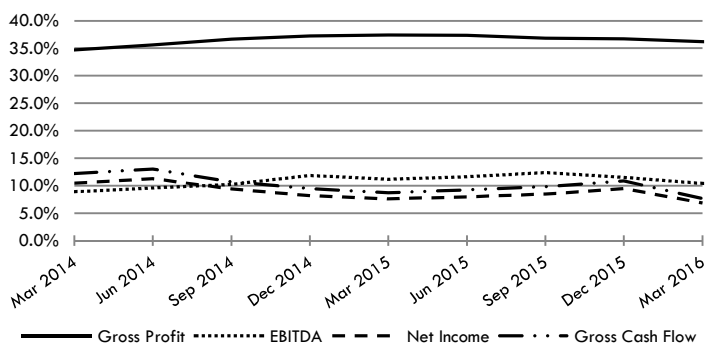
	YTD	3 Month	1 Year	2 Year	3 Year	5 Year	2015	2014	2013	2012	2011
AllianceBernstein Holding L.P.	-1.8%	-1.8%	-24.1%	-3.1%	2.3%	1.5%	-7.7%	21.0%	22.4%	33.3%	-43.9%
Ameriprise Financial, Inc.	-11.7%	-11.7%	-28.1%	-7.6%	8.5%	9.0%	-19.5%	15.0%	83.7%	26.2%	-13.7%
Cohen & Steers Inc.	27.7%	27.7%	-5.0%	-1.2%	2.6%	5.6%	-27.6%	5.0%	31.5%	5.4%	10.7%
Diamond Hill Investment Group Inc.	-6.2%	-6.2%	10.9%	16.2%	31.6%	17.3%	36.9%	16.6%	74.4%	-8.3%	2.3%
Legg Mason Inc.	-11.6%	-11.6%	-37.2%	-15.9%	2.6%	-0.8%	-26.5%	22.7%	69.1%	6.9%	-33.7%
Oaktree Capital Group, LLC	3.4%	3.4%	-4.5%	-7.9%	-1.1%	N/A	-7.9%	-11.9%	29.3%	N/A	N/A
Pzena Investment Management, Inc	-12.2%	-12.2%	-17.7%	-19.9%	5.1%	1.4%	-9.1%	-19.6%	117.8%	24.7%	-41.1%
SEI Investments Co.	-17.8%	-17.8%	-2.4%	13.2%	14.3%	12.5%	30.9%	15.3%	48.8%	34.5%	-27.1%
Silvercrest Asset Management Group Inc.	7.1%	7.1%	-10.6%	-16.5%	N/A	N/A	-24.0%	-8.2%	N/A	N/A	N/A
Waddell & Reed Financial, Inc.	-17.9%	-17.9%	-52.5%	-43.5%	-18.7%	-10.3%	-42.5%	-23.5%	87.0%	40.6%	-29.8%
Westwood Holdings Group Inc.	12.6%	12.6%	-2.7%	-3.3%	9.7%	7.8%	-15.7%	-0.1%	51.4%	11.9%	-8.5%
WisdomTree Investments, Inc.	-27.1%	-27.1%	-46.7%	-6.7%	3.2%	15.0%	0.0%	-11.5%	189.4%	1.2%	45.8%
<b>Median of Industry Public Companies</b>	<b>-8.9%</b>	<b>-8.9%</b>	<b>-14.1%</b>	<b>-7.1%</b>	<b>3.2%</b>	<b>6.7%</b>	<b>-12.4%</b>	<b>2.4%</b>	<b>69.1%</b>	<b>18.3%</b>	<b>-20.4%</b>

(Multiple year periods are calculated as the average annual return.)

## Median Quarterly Revenue Growth of All Investment Advisory Companies



## Median Gross Profit, EBITDA, Net Income and Gross Cash Flow Margins



## Median Public Company Multiples of the Investment Advisory Industry

Date:	3/31/2014	6/30/2014	9/30/2014	12/31/2014	3/31/2015	6/30/2015	9/30/2015	12/31/2015	3/31/2016
EV/Revenues Multiple	4.3x	4.0x	3.4x	3.5x	2.9x	3.3x	3.0x	3.1x	2.8x
EV/EBITDA Multiple	13.5x	11.7x	9.6x	9.5x	9.3x	10.3x	8.3x	8.6x	6.7x
Price/Earnings Multiple	20.6x	19.2x	16.6x	17.0x	17.6x	18.8x	15.3x	16.0x	18.2x
EV/Gross Cash Flows Multiple	17.6x	16.5x	17.2x	12.6x	17.4x	16.6x	14.0x	11.6x	13.2x

This industry research is provided at no charge to Cogent Valuation's clients. Research or detailed information not covered in this report can be obtained for a fee. Contact Steven Kam at 415-392-0888 for additional information or questions in connection with this research report. Copyright © 2016 Cogent Valuation. All Rights Reserved.

# Quarterly Industry Update

As of March 31, 2016

Industry: Investment Advisory



## Industry Initial Public Offerings (dollars in millions, except share prices)

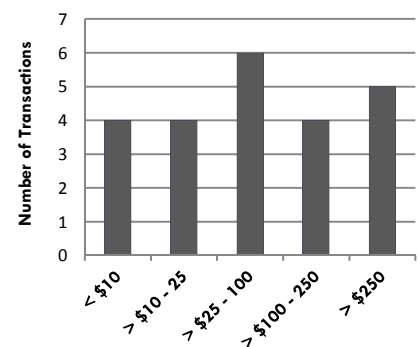
Offer Date	Company Name	Offer Price	Shares Offered	Amount Raised	Total Assets	Debt	LTM Revenues	LTM EBITDA	LTM Net Income	LTM Cash Flows
3/11/2016	Harwood Wealth Management Group Plc	\$1.17	16.7	\$19.4	\$11.8	\$0.4	\$9.6	\$2.3	\$0.5	\$2.3
5/8/2013	Tristate Capital Holdings, Inc.	\$11.50	5.7	\$65.6	\$2,073.1	\$27.3	\$55.4	NA	\$10.7	N/A
5/8/2013	PennyMac Financial Services, Inc.	\$18.00	11.1	\$200.0	\$832.2	\$447.1	\$277.3	NA	\$10.3	N/A
5/1/2013	Voya Financial, Inc.	\$19.50	65.2	\$1,271.2	\$220,850.0	\$5,110.8	\$9,948.6	\$1,273.9	\$766.2	\$1,273.9
3/6/2013	Artisan Partners Asset Management Inc.	\$30.00	11.1	\$331.6	\$287.6	\$290.0	\$505.6	\$49.5	\$33.8	\$51.9
4/11/2012	Oaktree Capital Group, LLC	\$43.00	7.9	\$380.2	\$44,294.2	\$709.9	N/A	N/A	N/A	N/A
11/17/2011	Manning & Napier, Inc.	\$12.00	12.5	\$150.0	\$66.1	\$0.3	\$323.1	\$197.8	\$92.2	\$199.0
<b>Median of All IPOs</b>		<b>nm</b>	<b>nm</b>	<b>\$200.0</b>	<b>\$832.2</b>	<b>\$290.0</b>	<b>\$300.2</b>	<b>\$123.7</b>	<b>\$22.2</b>	<b>\$125.5</b>

nm: not meaningful, N/A: not applicable

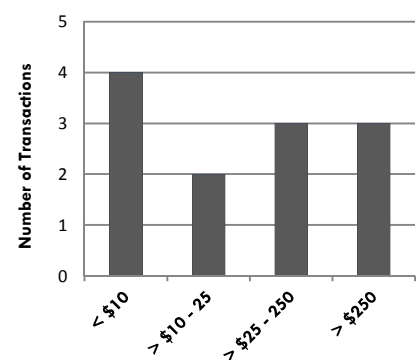
## Recent Merger and Acquisition Transactions for a Majority Stake (dollars in millions)

Transaction Date	Target	Acquirer	Transaction Size	% Bought	LTM Revenues	EV/Revenues
2/26/2016	Simmons & Company	Piper Jaffray & Co.	\$138.4	100%	\$96.0	1.4x
2/2/2016	RI Advice Group Pty Ltd	AZ Next Generation Advisory	\$5.4	100%	N/A	N/A
2/1/2016	The Mutual Fund Store, LLC	Financial Engines, Inc.	\$584.0	100%	N/A	N/A
1/22/2016	Investor Analytics, LLC	StatPro Group plc	\$16.0	100%	\$5.0	3.2x
1/5/2016	Courier Capital Corporation	Financial Institutions Inc.	\$14.0	100%	\$3.4	4.1x
12/31/2015	HDV Holdings, Inc.	Blucora, Inc.	\$600.0	100%	\$302.0	2.0x
10/30/2015	Samson Capital Advisors LLC	Fiera Capital Corporation	\$48.5	100%	N/A	N/A
9/30/2015	Finter Bank Zürich AG	Vontobel Holding AG	\$82.0	100%	N/A	N/A
9/20/2015	Conning & Company Inc.	Cathay Life Insurance	\$240.0	100%	N/A	N/A
8/31/2015	Savills Fund Management	Savills Investment Mgmt.	\$22.9	100%	\$46.4	0.5x
7/31/2015	Red Rocks Capital LLC	ALPS Holdings, Inc.	\$65.0	100%	N/A	N/A
7/13/2015	Entrust Private Wealth	Euroz Limited	\$5.9	100%	N/A	N/A
6/30/2015	DNCA Finance	Natixis Global Asset Mgmt.	\$625.2	71%	N/A	N/A
6/23/2015	Boyd Coughlan Ltd.	Mattioli Woods PLC	\$11.1	100%	\$4.0	2.8x
5/29/2015	Finova Singapore Pte.	ZICO Holdings Inc.	\$6.3	100%	N/A	N/A
4/30/2015	Independent Financial	AFH Financial Group Plc	\$6.2	100%	\$4.7	1.3x
4/1/2015	Cogent Partners, LP	Greenhill & Co., Inc.	\$102.6	100%	\$46.4	0.0x
3/3/2015	Doral Money Inc.	Triumph Capital Advisors	\$133.3	100%	N/A	N/A
12/22/2014	NexGen Financial Corp.	Natixis Global Asset Mgmt.	\$36.0	100%	\$11.7	2.4x
12/2/2014	Frank Russell Company	London Stock Exchange	\$2,700.0	100%	\$1,604.0	1.7x
10/2/2014	Boston Private Wealth	Boston Private Bank	\$60.0	100%	N/A	N/A
10/1/2014	Placemark Investments	Envestnet, Inc.	\$66.0	100%	\$20.9	3.2x
10/1/2014	Nuveen Investments, Inc.	TIAA-CREF Asset Mgmt.	\$6,250.0	100%	\$1,074.7	5.8x
<b>Median of the 23 M&amp;A Transaction Targets</b>			<b>\$65.0</b>	<b>100%</b>	<b>\$33.6</b>	<b>2.2x</b>

Size of M&A Transactions



LTM Revenues Reported



### Definitions of Financial Terms Used in this Quarterly Industry Update:

Enterprise Value (EV): Market Value of Equity + Market Value of Debt - Cash

Earnings Before Interest, Taxes, Depreciation and Amortization (EBITDA): Profitability metric sometimes also referred to as operating profit or operating earnings.

Gross Cash Flows: Net Income + Depreciation and Amortization Expense

Latest Twelve Months (LTM): Financial information is as of the latest twelve months through the date of this Quarterly Industry Update.

**Disclosures and Limitations:** This research report is for informational and discussion purposes only. Information presented herein is not investment advice of any kind to any person and does not constitute a recommendation as to the purchase or sale of any interests or as to any other course of action. General, financial, and statistical information concerning the details of this report and related industry are from sources Cogent Valuation believes to be reliable. Cogent Valuation has accurately reflected such information in this research report; however, Cogent Valuation makes no representation as to the sources' accuracy or completeness and has accepted this information without further verification. Neither all nor any part of the content of this report may be conveyed to the public through advertising, public relations, news, sales, mail, direct transmittal, or other media without the prior written consent of Cogent Valuation. Cogent Valuation's research is as of the date reported herein. Cogent Valuation has no affiliation with any of the companies comprising the industry used as a basis for research in this report, nor does Cogent Valuation hold any investments in the companies listed herein. The content of this report may be used, in part, as a basis for any work that Cogent Valuation performs for you in the future at the sole discretion of Cogent Valuation. THIS REPORT IS NOT TO BE USED OR CONSIDERED UNDER ANY CIRCUMSTANCE BY ANYONE AS INVESTMENT ADVICE. This industry research is provided at no charge to Cogent Valuation's clients. Research or detailed information not covered in this report can be obtained for a fee. Contact Steven Kam at 415-392-0888 for additional information or questions in connection with this research report. Copyright © 2016 Cogent Valuation. All Rights Reserved.