

# Quarterly Industry Update

As of September 30, 2013

Industry: Television Broadcasting



## Industry Summary

Cogent Valuation identified publicly traded companies, IPOs, and recent M&A transactions within the Television Broadcasting industry, which provides a basis for market and transaction pricing that can be used by your firm in estimating market sentiment and its impact on your firm's value. Since September 30, 2012, the median 52-week share price return of the Television Broadcasting industry has increased by 41.6%. In the last quarter, the median price-to-earnings multiple increased from 16.0x to 16.2x.

## Comparable Public Company Key Statistics

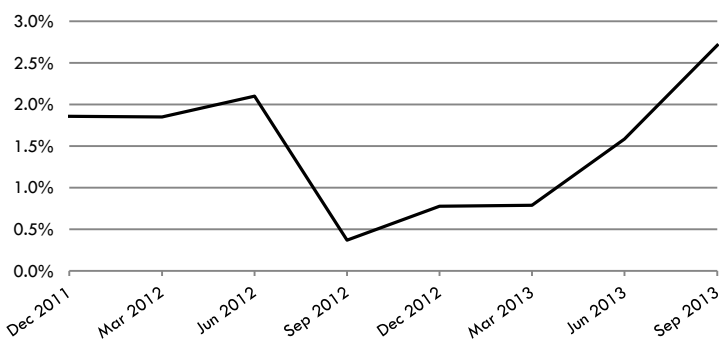
Median 52-Week Return	41.6%	Median EV/Revenue Multiple	3.6x	Median Price/Earnings Multiple	16.2x
Median 3-Year CAGR Return	24.7%	Median EV/EBITDA Multiple	11.2x	Median EV/Gross CF Multiple	17.4x

## Comparable Public Company Market Price Returns (As of September 30, 2013)

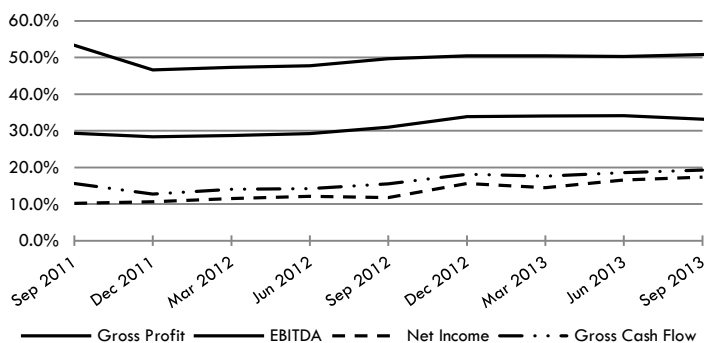
	YTD	3 Month	1 Year	2 Year	3 Year	5 Year	2012	2011	2010	2009	2008
CBS Corporation	45.0%	12.9%	51.8%	64.5%	51.5%	30.5%	40.2%	42.5%	35.6%	71.6%	-69.9%
Central European Media Enterprises Ltd.	-15.0%	58.6%	-19.4%	-18.0%	-40.5%	-39.6%	-5.2%	-68.0%	-13.8%	8.7%	-81.3%
Crown Media Holdings Inc.	66.5%	24.7%	84.4%	46.8%	8.8%	-9.3%	52.9%	-53.8%	80.7%	-49.1%	-56.2%
Discovery Communications, Inc.	33.0%	9.3%	41.6%	49.8%	24.7%	42.7%	54.9%	-1.8%	36.0%	116.6%	N/A
Entravision Communications Corporation	255.4%	-4.1%	340.3%	140.5%	43.7%	17.0%	6.4%	-39.3%	-24.4%	117.9%	-80.1%
Scripps Networks Interactive, Inc.	34.9%	17.0%	27.6%	45.0%	18.0%	16.6%	36.5%	-18.0%	24.7%	88.6%	N/A
AMC Networks Inc.	38.4%	4.9%	57.4%	46.4%	N/A	N/A	31.7%	N/A	N/A	N/A	N/A
Viacom, Inc.	58.5%	22.9%	56.0%	46.9%	32.2%	27.5%	16.1%	14.6%	33.2%	56.0%	-56.6%
Twenty-First Century Fox, Inc.	31.4%	2.9%	36.7%	47.1%	36.9%	22.8%	43.0%	22.5%	6.4%	50.6%	-55.6%
Starz	-75.8%	27.3%	-73.0%	N/A	N/A	N/A	48.6%	N/A	N/A	N/A	N/A
Grupo Televisa, S.A.B.	5.2%	12.5%	18.9%	23.3%	13.9%	5.0%	26.2%	-18.8%	24.9%	39.0%	-37.1%
<b>Median of Industry Public Companies</b>	<b>34.9%</b>	<b>12.9%</b>	<b>41.6%</b>	<b>46.8%</b>	<b>24.7%</b>	<b>17.0%</b>	<b>36.5%</b>	<b>-18.0%</b>	<b>24.9%</b>	<b>56.0%</b>	<b>-56.6%</b>

(Multiple year periods are calculated as the average annual return.)

## Median Quarterly Revenue Growth of All Television Broadcasting Companies



## Median Gross Profit, EBITDA, Net Income and Gross Cash Flow Margins



## Median Public Company Multiples of the Television Broadcasting Industry

Date:	9/30/2011	12/31/2011	3/31/2012	6/30/2012	9/30/2012	12/31/2012	3/31/2013	6/30/2013	9/30/2013
EV/Revenues Multiple	2.5x	2.8x	2.9x	3.0x	3.0x	3.2x	3.2x	3.2x	3.6x
EV/EBITDA Multiple	7.0x	8.2x	8.2x	9.3x	9.7x	9.4x	9.8x	10.3x	11.2x
Price/Earnings Multiple	14.6x	14.2x	17.4x	17.3x	21.1x	15.1x	15.6x	16.0x	16.2x
EV/Gross Cash Flows Multiple	12.6x	15.8x	16.1x	21.8x	18.8x	15.8x	15.4x	15.6x	17.4x

This industry research is provided at no charge to Cogent Valuation's clients. Research or detailed information not covered in this report can be obtained for a fee. Contact Steven Kam at 415-392-0888 for additional information or questions in connection with this research report.

# Quarterly Industry Update

As of September 30, 2013

Industry: Television Broadcasting



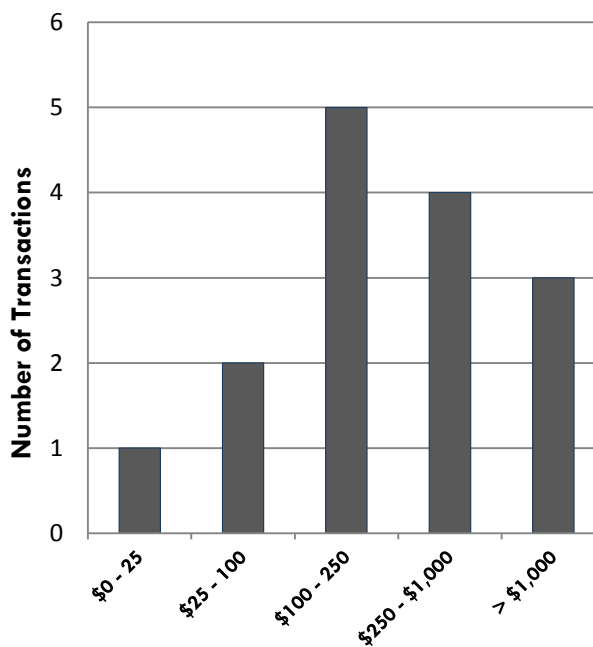
## Industry Initial Public Offerings (dollars in millions, except share prices)

Offer Date	Company Name	Offer Price	Shares Offered	Amount Raised	Total Assets	Debt	LTM Revenues	LTM EBITDA	LTM Net Income	LTM Cash Flows
5/11/2011	Phoenix New Media Limited	\$11.00	12.8	\$140.4	\$72.3	\$0.0	\$92.2	\$7.6	\$5.1	\$7.6
10/31/2006	RR Media Ltd.	\$12.50	3.8	\$47.5	\$27.3	\$0.0	\$40.5	\$11.9	\$7.0	N/A
5/31/2006	CTC Media, Inc	\$14.00	24.7	\$345.9	\$288.5	\$21.2	\$273.6	\$133.7	\$72.0	\$137.0
3/23/2006	Global Traffic Network Inc.	\$5.00	3.8	\$19.0	\$6.6	\$2.2	\$15.4	\$2.5	\$1.4	N/A
11/24/2003	Nexstar Broadcasting Group, Inc.	\$14.00	10.0	\$140.0	\$557.2	\$462.7	\$270.1	\$103.3	(\$96.5)	N/A
9/23/2003	Journal Communications, Inc.	\$15.00	17.3	\$258.8	\$742.9	\$75.0	\$824.6	\$167.2	\$61.6	N/A
8/2/2000	Entravision Communications Corporation	\$16.50	39.5	\$752.3	\$604.3	\$487.5	\$85.7	\$6.3	(\$74.3)	\$29.3
5/3/2000	Crown Media Holdings Inc.	\$14.00	10.0	\$140.0	\$88.2	\$30.3	\$33.9	\$0.8	(\$60.7)	N/A
<b>Median of All IPOs</b>		<b>nm</b>	<b>nm</b>	<b>\$140.2</b>	<b>\$188.4</b>	<b>\$25.8</b>	<b>\$88.9</b>	<b>\$9.8</b>	<b>\$3.2</b>	<b>\$29.3</b>

## Recent Merger and Acquisition Transactions for a Majority Stake (dollars in millions)

Transaction Date	Target	Acquirer	Transaction Size	% Bought
5/17/2013	Outdoor Channel Holdings	Kroenke Sports	\$265.0	100%
8/8/2013	Fisher Communications	Sinclair Broadcast Group	\$373.6	100%
7/5/2013	Astral Media Inc.	Bell Media Inc.	\$3,422.0	100%
11/19/2012	Consolidated Media	News Limited	\$2,244.0	100%
10/19/2012	Score Media Inc.	Rogers Media Inc.	\$151.3	100%
4/3/2012	Plum TV	Media Greenhouse	\$15.2	100%
3/30/2012	WLNY-TV	CBS Television Stations	\$55.0	100%
4/1/2011	CTVglobemedia	BCE	\$3,126.9	85%
3/30/2011	Telestar S.A.	Hyperion SA	\$26.6	100%
3/1/2011	CJ Media	CJ E&M	\$112.1	100%
11/9/2010	Alloy	Natixis Private Equity	\$139.3	100%
10/13/2010	Shed Media	Warner Bros.	\$199.5	100%
7/23/2010	Channel 5 Broadcasting	Northern and Shell	\$160.6	100%
3/29/2010	Zee News	Zee Entertainment	\$258.8	100%
12/15/2009	The Travel Channel	Scripps Networks	\$877.5	65%
<b>Median of All Transaction Targets</b>			<b>\$199.5</b>	<b>100%</b>

## Size of Merger and Acquisition Transactions (dollars in millions)



**Disclosures and Limitations:** This research report is for informational and discussion purposes only. This report and any information presented herein is not investment advice of any kind to any person and does not constitute a recommendation as to the purchase or sale of any interests or as to any other course of action. General, financial, and statistical information concerning the details of this report and related industry are from sources Cogent Valuation believes to be reliable. Cogent Valuation has accurately reflected such information in this research report; however, Cogent Valuation makes no representation as to the sources' accuracy or completeness and has accepted this information without further verification. Neither all nor any part of the content of this report may be conveyed to the public through advertising, public relations, news, sales, mail, direct transmittal, or other media without the prior written consent of Cogent Valuation. Cogent Valuation's research is as of the date reported herein. Cogent Valuation has no affiliation with any of the companies comprising the composite used as a basis for research in this report, nor does Cogent Valuation hold any investments in the companies listed herein. The content of this report may be used, in part, as a basis for any work that Cogent Valuation performs for you in the future at the sole discretion of Cogent Valuation. THIS REPORT IS NOT TO BE USED OR CONSIDERED UNDER ANY CIRCUMSTANCE BY ANYONE AS INVESTMENT ADVICE. This industry research is provided at no charge to Cogent Valuation's clients. Research or detailed information not covered in this report can be obtained for a fee. Contact Steven Kam at 415-392-0888 for additional information or questions in connection with this research report. Copyright © 2013 Cogent Valuation. All Rights Reserved.