

Quarterly Industry Update

As of December 31, 2013

Industry: Medical Recordkeeping

Industry Summary

Cogent Valuation identified publicly traded companies, IPOs, and recent M&A transactions within the Medical Recordkeeping industry, which provides a basis for market and transaction pricing that can be used by your firm in estimating market sentiment and its impact on your firm's value. Since December 31, 2012, the median 52-week share price return of the Medical Recordkeeping industry has increased by 22.7%. In the last quarter, the median price-to-earnings multiple decreased from 37.8x to 34.6x.

Comparable Public Company Key Statistics

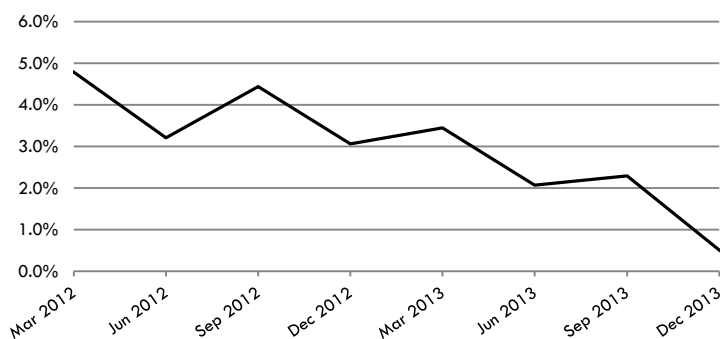
Median 52-Week Return	22.7%	Median EV/Revenue Multiple	3.4x	Median Price/Earnings Multiple	34.6x
Median 3-Year CAGR Return	1.9%	Median EV/EBITDA Multiple	16.9x	Median EV/Gross CF Multiple	34.5x

Comparable Public Company Market Price Returns (As of December 31, 2013)

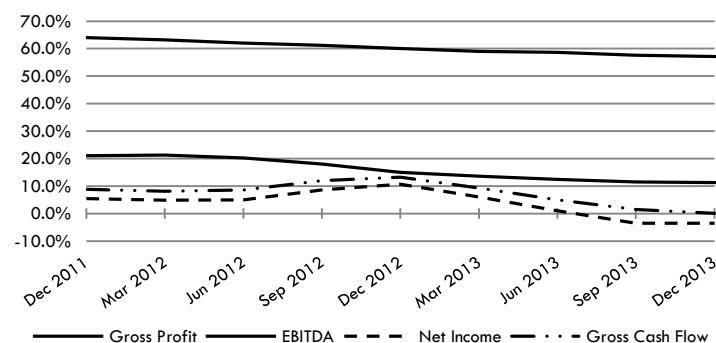
	YTD	3 Month	1 Year	2 Year	3 Year	5 Year	2012	2011	2010	2009	2008
Cerner Corporation	43.8%	6.1%	43.8%	34.9%	33.0%	42.1%	26.5%	29.3%	14.9%	114.4%	-31.8%
Allscripts Healthcare Solutions, Inc.	64.1%	4.0%	64.1%	-9.7%	-7.1%	9.3%	-50.3%	-1.7%	-4.7%	103.9%	N/A
athenahealth, Inc.	83.5%	23.9%	83.5%	65.5%	48.6%	29.0%	49.2%	19.9%	-9.4%	20.3%	4.5%
Quality Systems Inc.	21.3%	-3.1%	21.3%	-24.5%	-15.5%	-0.7%	-53.1%	6.0%	11.2%	44.0%	43.1%
Computer Programs & Systems Inc.	22.8%	5.7%	22.8%	10.0%	9.7%	18.2%	-1.5%	9.1%	1.7%	71.8%	17.9%
Merge Healthcare Incorporated	-6.1%	-11.1%	-6.1%	-30.8%	-14.6%	12.6%	-49.1%	30.0%	11.0%	162.5%	7.6%
Nuance Communications, Inc.	-31.9%	-18.6%	-31.9%	-22.3%	-5.8%	8.0%	-11.3%	38.4%	17.1%	49.9%	-44.5%
Streamline Health Solutions, Inc.	22.7%	-8.2%	22.7%	101.6%	62.1%	28.7%	231.2%	4.8%	-29.6%	17.7%	8.8%
Median of Industry Public Companies	22.7%	0.4%	22.7%	0.2%	1.9%	15.4%	-6.4%	14.5%	6.4%	60.9%	7.6%

(Multiple year periods are calculated as the average annual return.)

Median Quarterly Revenue Growth of All Medical Recordkeeping Companies



Median Gross Profit, EBITDA, Net Income and Gross Cash Flow Margins



Median Public Company Multiples of the Medical Recordkeeping Industry

Date:	12/31/2011	3/31/2012	6/30/2012	9/30/2012	12/31/2012	3/31/2013	6/30/2013	9/30/2013	12/31/2013
EV/Revenues Multiple	3.8x	4.3x	3.4x	3.4x	3.4x	3.5x	3.3x	3.6x	3.4x
EV/EBITDA Multiple	17.0x	19.3x	14.5x	13.9x	17.7x	20.1x	22.7x	21.3x	16.9x
Price/Earnings Multiple	33.9x	36.7x	36.7x	35.2x	29.4x	32.2x	27.8x	37.8x	34.6x
EV/Gross Cash Flows Multiple	24.4x	30.3x	28.5x	36.6x	26.0x	35.3x	20.8x	29.1x	34.5x

This industry research is provided at no charge to Cogent Valuation's clients. Research or detailed information not covered in this report can be obtained for a fee. Contact Steven Kam at 415-392-0888 for additional information or questions in connection with this research report.

The disclosures and limitations of this research on page two are an integral part of this report.

Quarterly Industry Update

As of December 31, 2013

Industry: Medical Recordkeeping

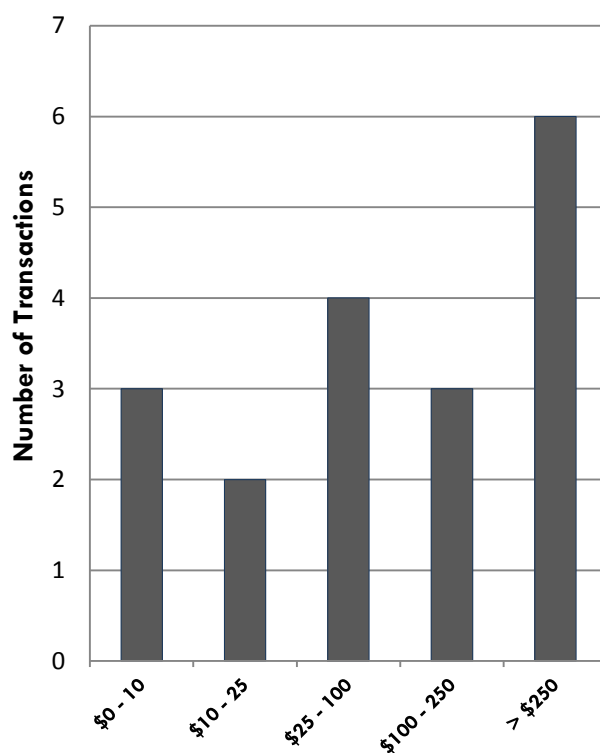
Industry Initial Public Offerings (dollars in millions, except share prices)

Offer Date	Company Name	Offer Price	Shares Offered	Amount Raised	Total Assets	Debt	LTM Revenues	LTM EBITDA	LTM Net Income	LTM Cash Flows
9/26/2013	Premier, Inc.	\$27.00	28.2	\$760.1	\$598.9	\$34.6	\$869.3	\$407.1	\$0.0	\$434.7
3/27/2012	Vocera Communications	\$16.00	5.9	\$93.6	\$49.8	\$8.3	\$79.5	\$1.2	(\$3.0)	\$2.2
2/1/2012	Greenway Medical Technologies	\$10.00	6.7	\$66.7	\$85.0	\$0.0	\$105.8	\$4.9	\$32.6	N/A
2/1/2011	Epocrates	\$16.00	5.4	\$85.8	\$127.2	\$0.0	\$104.0	\$16.2	(\$3.6)	N/A
4/21/2010	DynaVox	\$15.00	9.4	\$140.6	\$138.9	\$90.0	\$111.7	\$30.2	\$4.4	N/A
9/19/2007	athenahealth	\$18.00	6.3	\$113.2	\$44.3	\$32.0	\$86.9	\$1.5	\$8.0	\$6.3
2/2/2005	MMRGlobal	\$7.00	6.0	\$42.0	N/A	N/A	N/A	N/A	N/A	N/A
5/21/2002	Computer Programs & Systems	\$16.50	3.0	\$49.5	\$17.6	\$0.7	\$63.1	\$10.6	\$7.1	\$11.6
1/29/1998	Merge Healthcare	\$6.00	1.9	\$11.4	\$7.6	\$2.1	\$9.7	\$1.3	\$2.1	\$1.6
Median of All IPOs		nm	nm	\$85.8	\$67.4	\$5.2	\$95.5	\$7.7	\$3.2	\$6.3

Recent Merger and Acquisition Transactions for a Majority Stake (dollars in millions)

Transaction Date	Target	Acquirer	Transaction Size	% Bought
11/4/2013	Greenway Medical	Vitera Healthcare	\$643.6	100%
10/9/2013	WISEMAN Co., Ltd.	NM Holdings Co., Ltd.	\$82.9	100%
9/16/2013	Ascribe	EMIS Group	\$88.7	100%
3/12/2013	Epocrates	athenahealth	\$307.2	100%
9/12/2012	Strand Technology	Advanced Health and Care	\$3.2	100%
3/30/2012	MediConnect Global	Verisk Analytics	\$354.5	100%
12/19/2011	Medrium	Nightingale Informatix	\$1.8	100%
11/10/2011	Sage Software Healthcare	Vista Equity Partners	\$314.7	100%
10/11/2011	Healthscreen Solutions	Optimed Software	\$5.8	100%
7/19/2011	iSOFT Group	CSC Computer Sciences	\$433.6	100%
1/3/2011	HealthPort	CompuGROUP Holding	\$18.0	100%
10/29/2010	PHNS	Actis Capital	\$250.0	100%
8/31/2010	American Healthcare Holdings	CompuGROUP Holding	\$65.0	100%
8/24/2010	Eclipsys	Allscripts-Misys Healthcare	\$1,288.5	100%
8/19/2010	Rx Systems	EMIS Group	\$15.6	79%
5/21/2010	Medfusion	Intuit	\$79.0	100%
4/23/2010	AMICAS	Merge Healthcare	\$222.4	100%
3/18/2010	Quadrant	Francisco Partners Management	\$125.5	100%
Median of All Transaction Targets			\$107.1	100%

Size of Merger and Acquisition Transactions (dollars in millions)



Disclosures and Limitations: This research report is for informational and discussion purposes only. This report and any information presented herein is not investment advice of any kind to any person and does not constitute a recommendation as to the purchase or sale of any interests or as to any other course of action. General, financial, and statistical information concerning the details of this report and related industry are from sources Cogent Valuation believes to be reliable. Cogent Valuation has accurately reflected such information in this research report; however, Cogent Valuation makes no representation as to the sources' accuracy or completeness and has accepted this information without further verification. Neither all nor any part of the content of this report may be conveyed to the public through advertising, public relations, news, sales, mail, direct transmittal, or other media without the prior written consent of Cogent Valuation. Cogent Valuation's research is as of the date reported herein. Cogent Valuation has no affiliation with any of the companies comprising the composite used as a basis for research in this report, nor does Cogent Valuation hold any investments in the companies listed herein. The content of this report may be used, in part, as a basis for any work that Cogent Valuation performs for you in the future at the sole discretion of Cogent Valuation. **THIS REPORT IS NOT TO BE USED OR CONSIDERED UNDER ANY CIRCUMSTANCE BY ANYONE AS INVESTMENT ADVICE.** This industry research is provided at no charge to Cogent Valuation's clients. Research or detailed information not covered in this report can be obtained for a fee. Contact Steven Kam at 415-392-0888 for additional information or questions in connection with this research report. Copyright © 2013 Cogent Valuation. All Rights Reserved.